

The University of Roehampton  
**International Summer School**

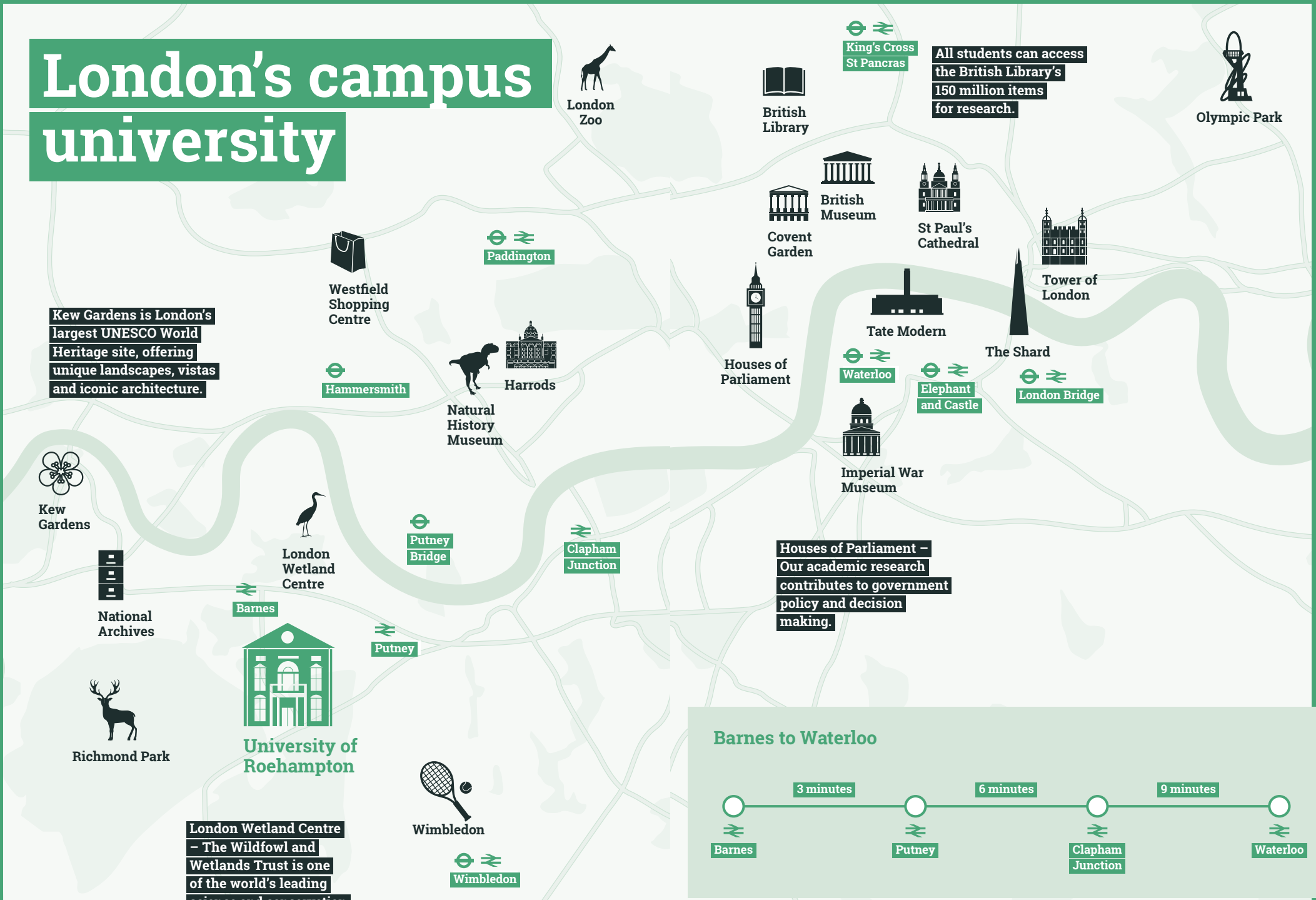


# Welcome to Roehampton

The University of Roehampton invites you to study abroad on our beautiful campus in south west London. You will live alongside international students, make life-long friends and return home with a new perspective on the world and the life skills that employers are looking for.

**Studying at Roehampton gives you the best of both worlds; a welcoming campus community and easy access to central London.**

# London's campus university



**Kew Gardens is London's largest UNESCO World Heritage site, offering unique landscapes, vistas and iconic architecture.**

**All students can access the British Library's 150 million items for research.**

**National Archives**

**Houses of Parliament – Our academic research contributes to government policy and decision making.**

**London Wetland Centre – The Wildfowl and Wetlands Trust is one of the world's leading science and conservation institutions in its field.**

## Barnes to Waterloo



# Your Campus

**With a history dating back over 175 years, Roehampton's four Colleges create a beautiful 54-acre parkland campus, with historic buildings alongside modern, cutting-edge facilities.**

You can enjoy our excellent campus facilities including a state-of-the-art library, computer and esports suites, dance and drama studios and laboratories for sports and biosciences. After class you can keep fit in our on-campus gym, catch up with your new friends in our organic coffee shop or enjoy the sunshine on Froebel lawn.

Our location in leafy south west London, welcoming campus and 24/7 security all give you extra reassurance of safety in London.

**54**

acre parkland campus

**30**

minutes to central London

**7**

miles to London's West End

**4**

friendly Colleges

**1**

opportunity of a lifetime



# Academic Programme

**Our summer modules make the most of our proximity to the city centre, and offer you the chance to experience London from a critical, academic perspective. With London as the backdrop to study, the city functions as a living classroom.**

You will choose one module per three week academic session. Modules may include:

- **Business Organisations in a Global Economy** (*School of Business and Law*)
- **Digital Photography Workshop** (*School of Arts*)
- **Hidden London** (*School of Humanities and Social Sciences*)
- **Introduction to the English Legal System** (*School of Business and Law*)
- **Londonopolis: Exploring the Global City** (*School of Humanities and Social Sciences*)
- **The Psychology of Murder** (*School of Psychology*)
- **Renaissance to Abstraction: The History of Art in London Museums** (*School of Humanities and Social Sciences*)
- **Software Development 1** (*School of Arts*)
- **Branding** (*School of Business and Law*)
- **Computing and Society** (*School of Arts*)
- **Gods and Heroes in Classical Mythology** (*School of Humanities and Social Sciences*)
- **Human Resource Management** (*School of Business and Law*)
- **Introduction to the London Stage** (*School of Arts*)
- **Magic, Murder and Mystery in London Literature** (*School of Humanities and Social Sciences*)
- **Media, City and Cultural Capital** (*School of Arts*)
- **The Psychology of Art** (*School of Psychology*)

Please note that not all modules will run each year – check our website for up to date module information, syllabi and credits. [roehampton.ac.uk/roehamptonabroad/summer-school](http://roehampton.ac.uk/roehamptonabroad/summer-school)

# Your Student Experience

## Arrivals and Orientation Programme

To help you settle into life at Roehampton we will provide:

- Heathrow Airport collection service
- Full orientation programme
- London scavenger hunt

## Guaranteed on-campus housing

- Living with summer school students
- Private bedrooms in shared flats
- Shared kitchen facilities

## Roehampton Abroad Social Programme

In addition to the great on-campus events and activities you can take part in the social programme. Designed for international students with a qualified tour guide past trips have included:

- Oxford and the Cotswolds
- The Tower of London
- Hampton Court Palace
- West-End Theatre Show

## Summer in London

With classes only running Monday – Thursday you will have plenty of time to enjoy London. The Roehampton Abroad team will give you plenty of tips and recommendations to make the most of your time in the city.



## What our students say...

**“The best thing about Roehampton is its diversity. You get to know people who come from all over the world, experience new cultures and learn new languages.”**

**“The location, you get the best of both worlds – a campus feel but very close to central London with so much going on!”**

**“At Roehampton, I loved the connections I made, how close I was to London and having the ability to take classes not offered at my home university.”**

**“Having a great community of people to support me. It’s so easy to travel everywhere, such a great location.”**

# Supporting You

**With a supportive campus environment, tailored events and activities and support from your dedicated Roehampton Abroad team – the Summer School will allow you to make the most of your time in London.**



## Roehampton Abroad

Roehampton Abroad is your dedicated on-campus study abroad team, on hand to support you. We will advise you throughout the application process, help you to prepare for arrival, support you during your time on campus and be your first point of contact until it is time for your adventure in London to end.



## Academic Support

The academic system might be a little different than in your home country. The Academic Achievement team run drop-in sessions and writing skills workshops to help you succeed academically.



## State-of-the-Art Library

The world-class University of Roehampton Library is staffed by a friendly and dedicated team who are there to help you. As a Roehampton student you will be able to enjoy all the benefits of our resources including:

- Thousands of online resources
- Private study rooms
- Learning Skills Hub



## Disabilities and Dyslexia Support

- Experienced on-campus team
- Accessible accommodation and classrooms
- Personalised support to meet your needs

We will ask you to inform us of your needs in advance so we can make necessary adjustments for you – all information will be kept strictly confidential and will only be used to support your studies.



## Your Wellbeing

Student Wellbeing Officers are available to provide you with confidential emotional and practical wellbeing support, including signposting you to other relevant support services.

- Wellbeing drop-ins
- Counselling services
- Chaplaincy pastoral care

# Application and Admissions



## How to Apply

You can apply online by visiting our website

[roehampton.ac.uk/roehamptonabroad/summer-school](https://roehampton.ac.uk/roehamptonabroad/summer-school)

## Application Deadline

1 May

## Application Requirements

Applicants should:

- Have completed high school or equivalent
- Have a minimum 2.8 GPA (out of 4) or equivalent
- Have approval from their home university (where appropriate)
- Be 18 years of age or older
- Have achieved a minimum of IELTS 6.0 or equivalent proof of English Language (where necessary)

## Programme Dates and Costs

For full up-to-date details please visit

[roehampton.ac.uk/roehamptonabroad/summer-school](https://roehampton.ac.uk/roehamptonabroad/summer-school)

If you are joining us from a partner institution please speak to your home school advisor for fee information.

## Contact Us

The Roehampton Abroad team are available via:

Email: [roehamptonabroad@roehampton.ac.uk](mailto:roehamptonabroad@roehampton.ac.uk)

Phone: +44 (0)20 8392 5009

In person: we regularly travel overseas and would love to meet you – email us find out where we'll be next!

**Our campus helps us provide a close-knit community feel for our students and a peaceful environment in which to study and live. At Roehampton you are valued as an individual.**





## **University of Roehampton**

Roehampton Lane | London | SW15 5PJ | UK

### **roehampton.ac.uk**

**Email:** [roehamptonabroad@roehampton.ac.uk](mailto:roehamptonabroad@roehampton.ac.uk)

**Phone:** +44 (0)20 8392 5009



[@roehamptonuni](https://twitter.com/roehamptonuni)



[roehamptonabroad](https://www.instagram.com/roehamptonabroad)



[roehampton.uni](https://www.facebook.com/roehampton.uni)



[roehamptonabroad](https://www.tiktok.com/roehamptonabroad)

This document was accurate at the time of going to print, February 2022. It is important therefore that you check the University website for updates as some information is subject to change.